



ULTRASONIC SCALERS

Ref. 100750

Ref. 100755

Ref. 100760



ULTRASONIC SCALERS

Oral treatments using ultrasound have been, and continue to be, one of the fundamental pillars of modern oral care. In recent years, this technology has undergone significant changes, with the emergence of new developments aimed, above all, at improving patient comfort and treatment effectiveness.

Aware of this reality, **MESTRA** presents its range of state-of-the-art dental cleaners: the **DA-10**, **Q5**, and **Q6** models, designed for demanding dental professionals and clinics. These devices combine precision, efficiency, and safety, providing deep cleaning while protecting enamel and gums.

Our technology is backed by years of research and thousands of satisfied dentists.

Furthermore, the **DA-10**, **Q5**, and **Q6** cleaners stand out for their ergonomics, ease of use, ease of cleaning, and ability to remove plaque and dental calculus without damaging tissue. Ideal for those seeking superior results, these models reflect **MESTRA's** commitment to excellence and oral health. Discover how the latest generation of ultrasonic technology can transform your dental practice.

Ultrasonic scaler DA10

REF. 100750

SIMPLE, ECONOMICAL AND EFFICIENT OPTION

HIGH-PERFORMANCE ELECTRONICS

- ✓ Equipped with a state-of-the-art chipset and advanced algorithms.
- ✓ Automatically distinguishes between teeth and gums.
- ✓ Ensures a comfortable and safe cleaning experience.

HIGH-QUALITY HANDPIECE WITH ILLUMINATION

- ✓ Detachable design allows for sterilization at high temperatures and pressures.
- ✓ Light tint improves visibility during treatment.

INTELLIGENT POWER LEVEL FEEDBACK

- ✓ Automatically adjusts power based on calculus hardness.
- ✓ Greater cleaning efficiency.



SPECIALIZED MODES AND TIPS

MODE FUNCTION

- G1** Removes large supragingival calculus.
- G2** Flat edge for dense supragingival calculus.
- G4** Interdental cleaning and plaque removal.
- P1** Periodontal treatment (subgingival calculus).

ELEGANT TOUCHSCREEN

- ✓ **Waterproof touch panel** with immediate response.
- ✓ **Quickly switch between modes with a single touch:** G (General Cleaning), P (Periodontal), E (Endodontic)
- ✓ **12 power levels** for precise treatment customization.



RESULTS BEFORE/AFTER



- ✓ **Supragingival scaling:** Removal of large calculus in all directions.
- ✓ **Periodontal treatment:** Removal of subgingival calculus and irrigation.

Specifications:

Ultrasonic scaler Q5

REF. 100755

PROFITEZ D'UN TRAITEMENT SANS DOULEUR

- ✓ Attractive classic black and white design.
- ✓ Power adjustment (100-800 μ l).
- ✓ **3 operating modes:** General cleaning, Periodontal treatment, Endodontic treatment.
- ✓ Automatic water supply from a bottle integrated into the device.
- ✓ **Waterproof control panel:**
 - Ultra-sensitive touchscreen that allows you to switch between G/P/E modes with a single touch.
 - 12 power levels.
 - Extremely easy cleaning.
- ✓ **Large-capacity water tank:**
 - 800 ml capacity (enough for at least two patients).
 - High-quality water pump.
 - Antibacterial tubing, compatible with distilled water and disinfectant solutions.
- ✓ **Includes IPX4 wireless foot pedal:** Eliminates tangled cables.

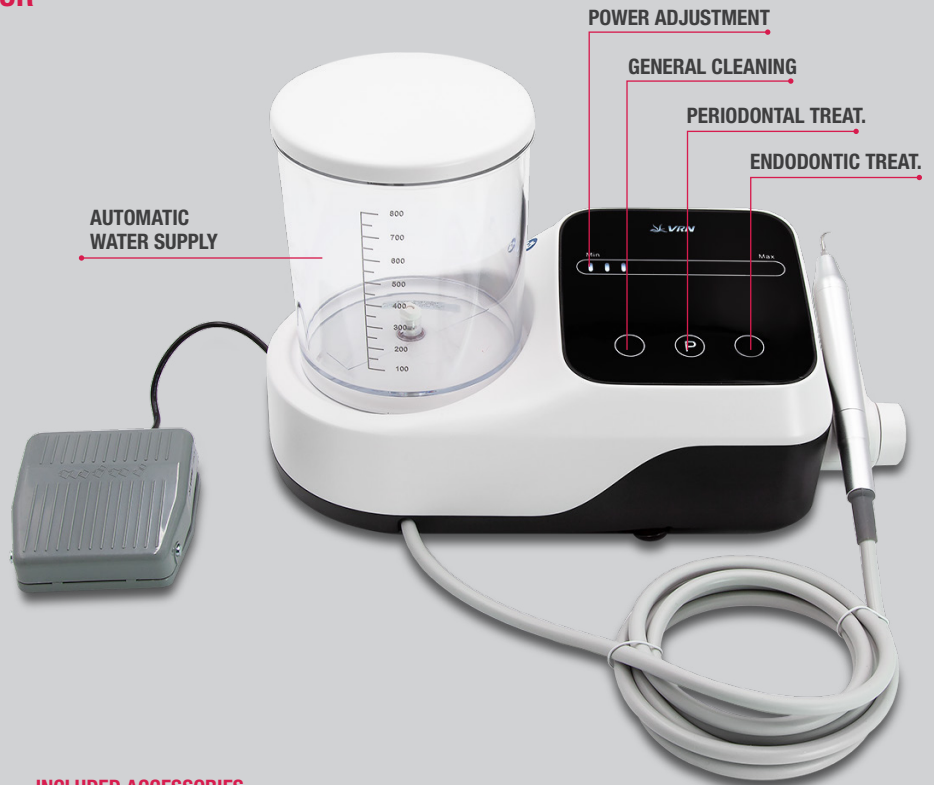
SINUSOIDAL WAVE TECHNOLOGY

Avoids the instantaneous shock produced by traditional square wave drives, providing stable amplitude and regular, powerful vibrations. Efficiency and comfort for painless dental cleaning.

Working tip hardness: 30 HRC
 Vibration frequency: 25-35 kHz
 Amplitude: 20-80 μ m
 Treatment depth: 14 mm

HANDPIECE WITH HIGH-QUALITY LED LIGHTING

- ✓ Detachable design for sterilization.
- ✓ Compatible with high-temperature and high-pressure sterilization.
- ✓ Light tint improves visibility.



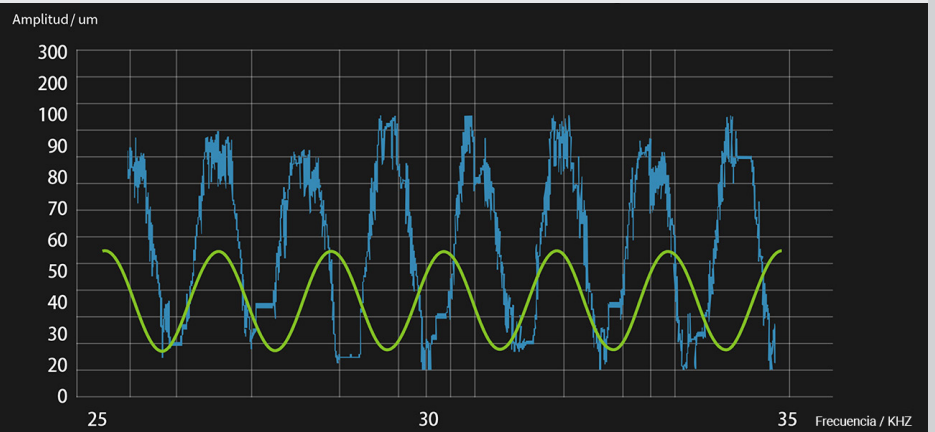
INCLUDED ACCESSORIES

- ✓ PH-2 LED Handpieces x4
- ✓ Wireless Foot Pedal x1
- ✓ Wired Foot Pedal x1
- ✓ Power Cable x1
- ✓ Water Bottle x1
- ✓ Endodontic Wrench x1
- ✓ Cleaning Tips x16
- ✓ Waterproof Cover x1
- ✓ #25 Endodontic Files x12

COMPARISON BETWEEN SINE WAVE DRIVE AND TRADITIONAL SQUARE WAVE DRIVE SIGNAL

- **Sine wave drive signal graph:**
 - Stable amplitude (20-80 μ m)
 - Regular vibrations.

- **Square wave drive signal graph (traditional cleaner):**
 - Instant impact.
 - Irregular amplitude.



TITANIUM ALLOY TIPS

Low-hardness periodontal tips that do not damage teeth. Comparative hardness:

- ✓ Stainless steel tip: HRC30
- ✓ Dental cement: HRC30-40
- ✓ Enamel: HRC50-60
- ✓ Stainless steel: HRC50



CLEANING RESULTS

Before treatment



After cleaning



P16 CLEANING TIP

- ✓ Spherical tip design (1.2 mm diameter)
- ✓ Minimizes gum irritation
- ✓ Amplitude less than 80 μ m



Specifications:

Ultrasonic scaler Q6

REF. 100760

EXCELLENCE IN DENTAL WORK

HIGH PERFORMANCE

6 functions in 1 device:

- ✓ Ultrasonic cleaning.
- ✓ Periodontal therapy.
- ✓ Root canal irrigation.
- ✓ Supragingival air polishing.
- ✓ Subgingival air polishing.
- ✓ Implant maintenance.

ELEGANT TOUCH PANEL

Clear interface with ultra-sensitive sensors, dust- and water-resistant design. Works even with gloves, water drops, or protective covers.

DUAL WATER TANK DESIGN

Quickly switch between tanks to use pure water or medicated solutions with a single click.

MULTIFUNCTIONAL WIRELESS FOOT PEDAL

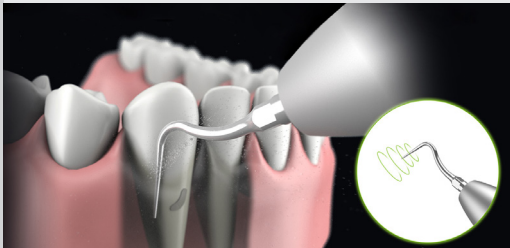
Cordless: Control power, mode changes, and start/stop.



ELLIPTICAL AMPLITUDE FOR GREATER COMFORT

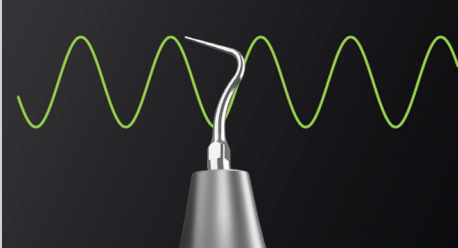
Elliptical vibration trajectory allows for:

- ✓ Operation at 0° relative to the tooth surface.
- ✓ Polishing effect.
- ✓ Uniform distribution of impact force.
- ✓ 360° cleaning without blind spots



SINE WAVE TECHNOLOGY

- ✓ Avoids sudden shocks (as with traditional square waves).
- ✓ Smooth and stable power output.
- ✓ Intelligent feedback for automatic power adjustment.



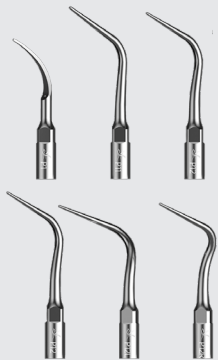
REVERSE BLOW CLEANING TECHNOLOGY

- ✓ Exclusive patent: Eliminates dust buildup without cleaning needles.
- ✓ 5 internal protection structures against clogging and moisture.



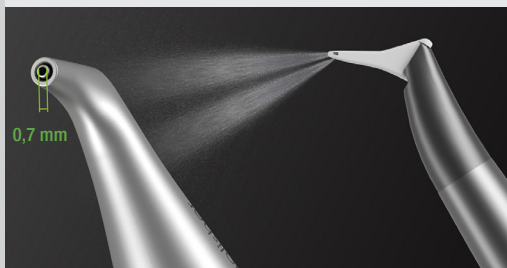
TITANIUM ALLOY TIPS

Low hardness to protect teeth and gums.



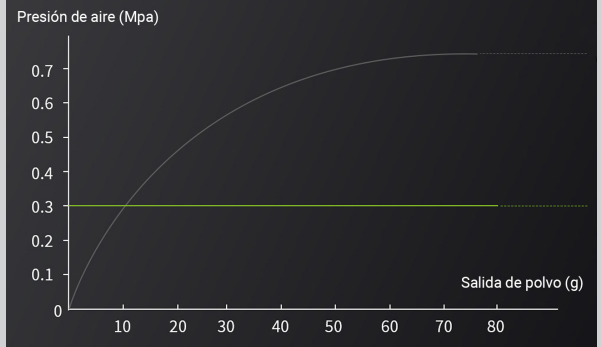
EFFECTIVE PLAQUE REMOVAL

- ✓ Supragingival polishing: 0.7 mm brush head (very high-quality steel).
- ✓ Subgingival polishing: Specialized handpiece for periodontal pockets.



CONSTANT PRESSURE ABRASIVE FLOW ADJUSTMENT

- ✓ Precise control of abrasive flow without varying air pressure.
- ✓ Eliminates discomfort from tooth sensitivity.



Specifications:



Talleres Mestraitua SL
 (+34) 944 530 388
 info@mestra.es - www.mestra.es
 48150 SONDIKA (Spain)



Management System
 ISO 9001:2015
 www.tuv.com
 ID 1100018003