



Curing LED lamps

Ref. 100700

Ref. 100710

Ref. 100705



CURING LED LAMPS

The **MESTRA** range of LED curing lights has been designed to optimize the polymerization process, offering solutions that perfectly adapt to the demands of any clinic.

With three different models, we cover a full spectrum of needs: from the most economical and functional option to the most sophisticated equipment with cutting-edge technology.

We have placed special emphasis on quality, employing the latest generation LED technology, thus ensuring deep and homogeneous polymerization that guarantees the longevity of the work. The ease of use of each of our models allows them to be effortlessly integrated into the workflow, optimizing chair time.

Furthermore, their energy efficiency and ergonomic design not only protect the environment but also improve the comfort of the user and their patients.



Basic curing lamp V200

REF. 100700

This is an efficient solution that brings essential and affordable technology to everyone. Designed to offer reliable and consistent performance, the **V200** is the smart choice for everyday use, or as a trusted backup for unexpected situations with higher-end products.

The **V200's** robust fiber optic light beam effectively directs the light, achieving homogeneous polymerization of composites. Its design prioritizes simplicity and durability, ensuring the user always has a functional and ready-to-use tool. The **V200** is ready to meet the basic requirements of any dental practice.

It stands out for its unbeatable value, making it an ideal option for new clinics, or as an indispensable second unit, offering peace of mind in case of unforeseen events. Like every other product in our catalog, it comes with the guarantee and support of **MESTRA**. More than 80 years of experience back us up.

CHARACTERISTICS

- ✓ Constant light intensity.
- ✓ Up to 600 polymerizations on a single recharge.
- ✓ Comfortable and ergonomic design. Easy to use.
- ✓ Automatic shut-off when not in use.
- ✓ Radiation: 1600–2000 W/cm²
- ✓ Emission limit: 3.9 x 10J
- ✓ Polymerization wavelength: 420–480 nm.

Power adapter: AC (100~240) V (50~60) Hz

Input power: 10VA

Output power: DC 5V/1A

LED light function: 3W blue LED

Wavelength: 420nm~480nm

Class: Class I

Accessible Emission Limit (AEL): 3.9 x 10J

Check: The LED light is working.

Radiation: 1600 W/m²~2000 W/m²



Specification:

Dimensions: 243 mm x Ø25 mm	
Weight: 390 g	Voltage: 3.7V
Capacity: 2200mAh	Rechargeable battery

Mid-range curing lamp DV 50

REF. 100705

The **MESTRA DV50** curing light has been designed to optimize every step of the composite polymerization process.

The main innovation of the **DV50** lies in the direct placement of the LED emitter, eliminating the optical fiber for unobstructed light transmission. This results in a significantly higher power density, reaching up to 2600 mW/cm². As a result, curing is very rapid, minimizing exposure time.

Thanks to advanced collimation technology, the LED light remains concentrated, ensuring deep and uniform polymerization, even in the most complex restorations.

Ergonomic and practical. Its straight and streamlined shape allows effortless access to posterior areas of the arch, such as molars and third molars, eliminating the discomfort associated with other curing lights.

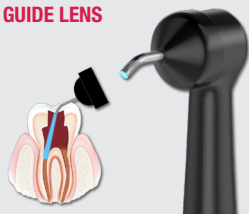
CHARACTERISTICS

- ✓ **Integrated light intensity meter on the charging base:** Check the lamp's efficiency at all times, ensuring optimal performance with every use.
- ✓ **Modern display and high-strength metal (aluminum) body:** Robust and durable design, ideal for intense daily use in the clinic.
- ✓ **Wireless charging without cables or connectors:** A clean and convenient base that facilitates charging and maintenance.
- ✓ **High-power LED (10W):** It guarantees exceptional light energy for efficient polymerization.
- ✓ **Caries detection function,** facilitating their diagnosis.



IT COMES WITH TWO GUIDE LENSES

ENDO GUIDE LENS



For the preparation of root apex and other stenoses.

SPHERICAL POLYMERIZATION LENS



For small composites. It is useful for building convex-proximal contacts.

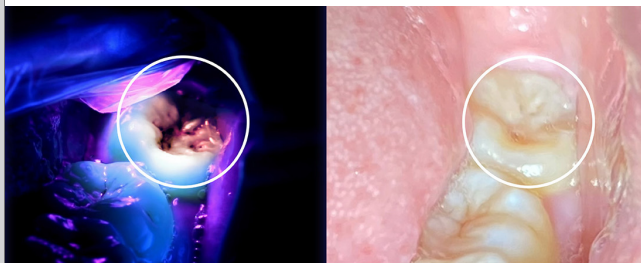
HIGH POWER LED: 10 W



The collimated light beam ensures a concentrated output over a smaller area, thus increasing the power density to over 2500 W/cm².

All this without sacrificing an effective application area of 10 mm², sufficient for curing even the largest repairs.

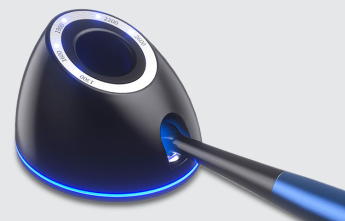
ACCURATE CARIES DETECTION



In caries detection mode, without changing the handpiece, the device emits red fluorescence when illuminating decayed areas, making caries diagnosis much easier. The projected shadows serve as a reference.

BASE WITH LIGHT INTENSITY MEASUREMENT

The charging base measures the light intensity to ensure the accuracy of the resin curing results.



ROTARY HEAD:

Greater flexibility and adaptability to easily reach any intraoral angle.



Specification:

Dimensions: 217 mm x Ø22,5 mm	Rechargeable battery: 2200mAh
Weight: 117 g	LED emitter 10 W
Intensidad máxima 2600mW/cm ²	Light intensity measurement function..
Wave length: 385 nm-515 nm.	Power adapter: ~ 100-240 V 50/60 Hz.

The **MESTRA VAFU** curing light is a premium dental polymerization device. Its light output reaches 3200 mW/cm², enabling ultra-fast curing in just 1 or 2 seconds, drastically minimizing the time the light remains in the mouth and optimizing patient comfort.

It features an advanced multi-LED head, composed of four independent LEDs. Each emits at a different frequency,

achieving an exceptionally broad light spectrum (385 nm to 515 nm). This ensures efficient polymerization in record time for virtually all dental materials available on the market.

ADDITIONAL FEATURES:

- ✓ **Integrated light intensity meter:**
Control the lamp's performance by simply bringing the head close to the charging base, ensuring optimal functionality.
- ✓ **Lens set:** They focus the light precisely for specific tasks. Four lenses specialized for different tasks and scenarios that arise within dental procedures.
- ✓ **Wireless and connector-free charging:**
A clean, convenient, and hassle-free base that simplifies recharging. A single battery charge can be enough for up to 500 cures.



INCLUDES:

- ✓ 1 main unit
- ✓ 1 charger
- ✓ 1 battery
- ✓ 1 set of lenses (4 units)
- ✓ 1 light shield
- ✓ 1 caries detection head
- ✓ Glasses

4 DIFFERENT LED PANELS

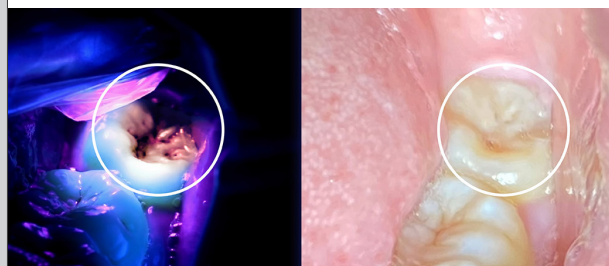


Each lens operates at a different frequency. **The scanned light spectrum ranges from 385 nm to 515 nm**, meaning that virtually all materials on the market can be polymerized in record time.



All this without sacrificing an effective application area of 10 mm², sufficient for curing even the largest repairs.

ACCURATE CARIES DETECTION



It comes with two heads: one of them is a caries detector. The tone of light emitted by this second head produces shadows on teeth with cavities, allowing for easy and early detection.

ROTATING HEAD



It provides all-encompassing illumination, easily illuminating various angles inside the mouth.

4 MAGNETIC PRINTHEADS



4 types of curing, including **spherical curing lens, root canal guidance, and spot curing**, to meet different clinical needs.

OLED SCREEN



It displays the operating modes and the battery charge level.

LIGHT INTENSITY METER



This detector is integrated into the charging base itself. Simply bring the charging head close to the sensor to check if the lamp is working correctly.

Specification:

Dimensions: 33 mm x 27 mm x 206 mm	Rechargeable battery
Weight: 160 g	Power > = 3200 mW/cm ² .
Battery capacity: 2200 mAh.	Power adapter: ≈ 100-240 V 50/60 Hz.
Wave length: 385nm-515nm	Light intensity measurement function.