

Scanner MAGIC EYE

Ref. 150100



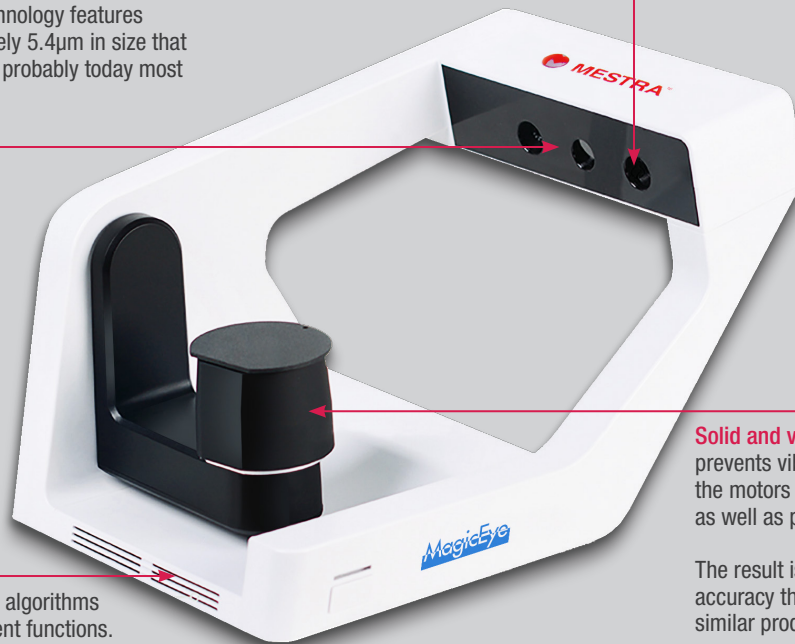
MagicEye is a scanner specially designed for use within the dental sector.

Its powerful and intuitive software incorporates a modern and extensive set of commands, as well as being fully compatible and integrable with 3D dental design CAD software, which gives it great versatility.

Why choose the MESTRA scanner, one of the fastest scanners on the market.

Blue light projector with DLP® technology features an array of tiny mirrors approximately 5.4µm in size that can be individually oriented. This is probably today most advanced projection technology.

State-of-the-art cameras: their 1.3 Mpixels impress, which when combined give a total 3D resolution of close to 2.6 Mpixels. Also, the capture speed is 60 Fps. The dump technology is of the Global Shutter type, the fastest available today.



Solid and very robust structure, which prevents vibrations. The movement of the motors is smooth and precise, as well as perfectly timed.

MagicEye employs state-of-the-art algorithms generation that incorporate intelligent functions. This feature is especially appreciated when the dental technician mounts models or stumps: the precision and speed of the fit is amazing.

The result is scanning speed and accuracy that is hard to find in other similar products.



I scan very fast.



High accuracy.



High resolution scan.

Technical characteristics and dimensions



Dimensions:

Height 235 mm • Width 255 mm

Depth 390 mm • Poids 5,1 kg

METHOD	Contactless scanning
PRECISION	<10µm
SPEED	6 sec bite scan 9 sec upper/lower jaw scan
WEIGHT	5 kg (without power supply and accessories)
CAMERA RESOLUTION	2 x 1,3 MP
ROOM TEMPERATURE	10 - 30 °C
VOLTAGE	230 V. 24 VAC
OUTPUT FORMAT	STL
LIGHT SOURCE	Blue

MINIMUM COMPUTER REQUIREMENTS:

ITEM	Model
OPERATING SYSTEM	Win 10, 64 bit
CPU	INTEL i5 - 9400H
DDR	DDR4 2666 8 GB
HDD	2TB 256 MB 7200 Rpm.
GRAPHIC CARD	GEFORCE GTX 1050 TI
PUERTO	USB 3.0



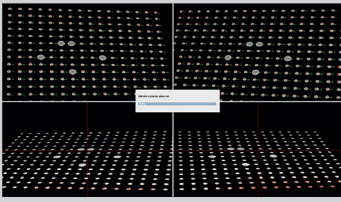
ACCESSORIES

Ref. 150100



ACCESSORIES	MODEL	PURPOSE	ACCESSORIES	MODEL	PURPOSE
Multi-trunnion support Ref. 150100-01		After filling the hole with fixative, it can be used to insert the abutment teeth.	Lift support general purpose Ref.150100-07		Used for calibration, model scan, and impression trays.
Gum support Ref. 150100-02		It is used to fix the jaws by keeping them fixed to an elastic band or BluTack.	Jaw support Ref. 150100-08		It is used to fix the jaws keeping them fixed by means of an adjustable clamp.
Articulator support Ref. 150100-03		Used for model scanning.	Articulator plate Ref. 150100-09		For scanning of articulators.
Calibration table Ref. 150100-04		Support to calibrate the scanner.	Font feeding Ref. 150100-10		Power supply AC 230 V. DC 24 V.
2 base supports Ref. 150100-05		Used to fix the jaws by keeping them fixed through an elastic band or BluTack.			
Printing support Ref. 150100-06		For cuvette scanning of impression.	Scanner spray Ref. 130355		Indispensable to achieve an optimal scan, increasing the resolution in the worst reading areas.

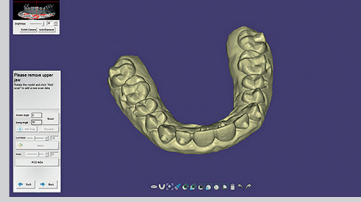
APPLICATIONS



Calibration example



Generate worksheet

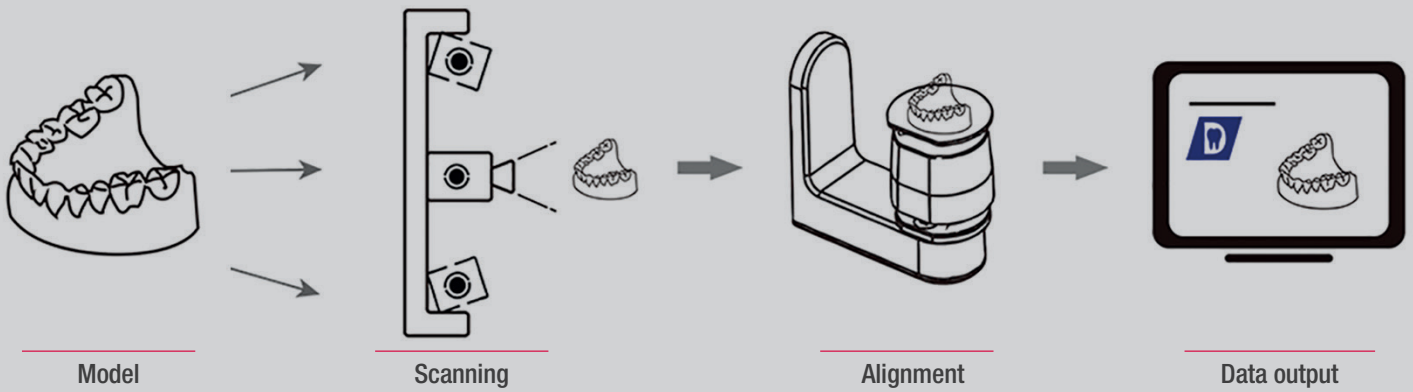


Scanning



Export meshes

WORK PROCESS

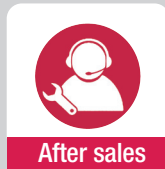


PURCHASE AND AFTER-SALES EXPERIENCE



Facility

Once the scanner is received, one of our official distributors will accompany you throughout the process of installing the scanner and its accessories.



After sales

The product warranty is 1 year. You can choose from several service options post-sale: **Basic, Advanced, and professional.** For this, we have the collaboration of **ExoDesign Dental** (specialized company in digital flow and CAD-CAM training).



Training

In the final price of the scanner, **a use and handling training valued at € 330, given by ExoDesign Dental, is included.** Throughout the start-up process, it will accompany you one of our official distributors.

Collaborating company:



MESTRA

Talleres Mestraitua SL
 (+34) 944 530 388
 info@mestra.es - www.mestra.es
 48150 SONDIKA (Spain)

