



SUN BEAM curing light

Ref. 080550



SUN BEAM curing light

Ref. 080550



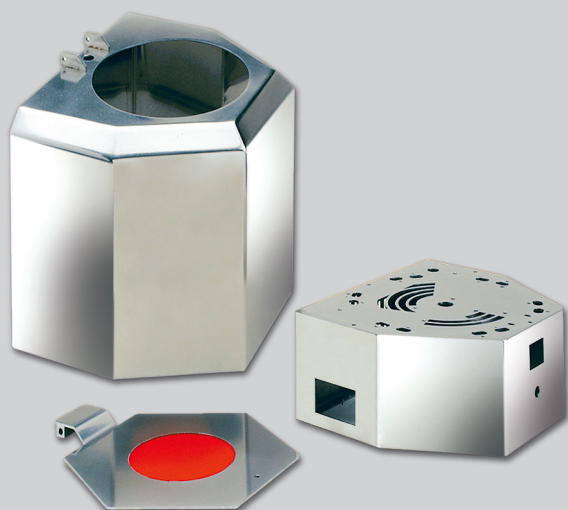
MESTRA presents its **Sun Beam** curing light. This is a general-purpose tool which is essential for Laboratory and Dental Clinic operations. A wide range of frequencies -280-550 nanometers- for curing most materials used in the dental sector.

The **Sun Beam** has also been designed to meet the essential safety requirements for this type of equipment.

Characteristics

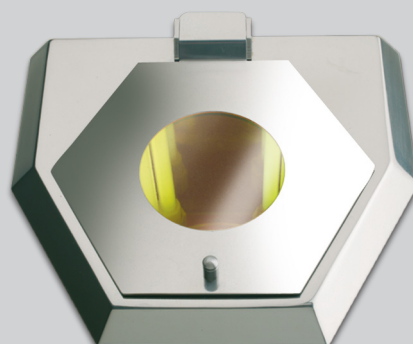
Height 315 mm	Spectrum 280/550 nanometers
Width 233 mm	Alimentation 230 V, 50/60 Hz
Depth 210 mm	Tray Ø135 mm
Weight 6,1 kg	Time range 3/20 min

Material



The curing light forms part of **MESTRA's** stainless steel line. All features have been built in this material. Note the polishing inside the curing chamber.

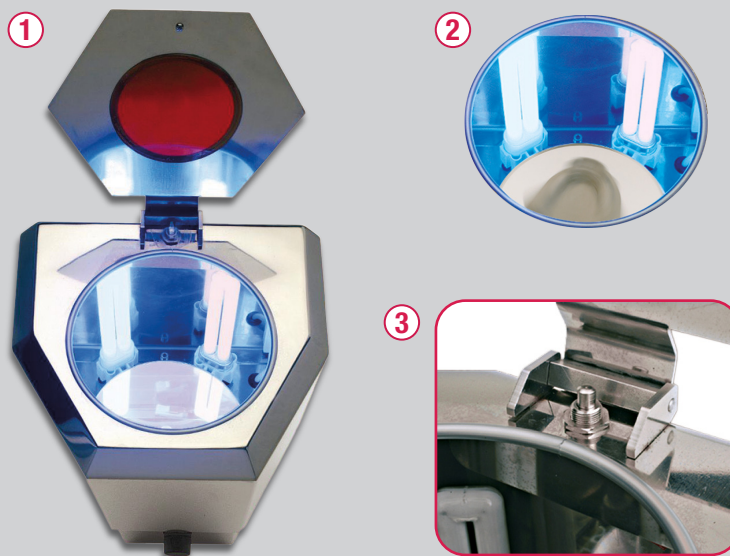
View



The curing process may be easily supervised through a spy "porthole". The viewing angle covers the entire chamber.

Interior

- 1** - The curing chamber door is on the top section of the unit. Full accessibility. Two-tone lamps light up the inside of the chamber.
- 2** - A rotating plate moves the material to be cured. The light bath reaches all corners, and distributes uniformly.
- 3** - A safety switch turns off the lamps if the chamber door opens accidentally while the unit is operational.



Ventilation

Maximum attention has been paid to the smallest details: an air ventilation system takes hot air from the chamber to prevent overheating.



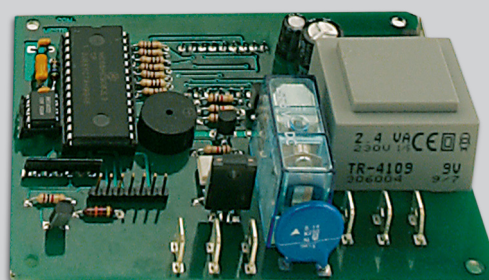
Controls

The machine is extraordinarily simple to handle. There is a single central button controlling all functions: On, off, cancellation of cycle, time selection etc.



Microprocessor

A electronic control with microprocessor and 7-segment display regulates the machine's functions. Automatic change warning after 500 hours of operation.





At **MESTRA** we are specialized in the manufacture and distribution of dental machinery and appliances. We are a Spanish company based in Bizkaia. We currently export to clients in more than fifty countries on five continents and we have more than a thousand references in our catalogue.

We have maintained a line of constant expansion since our foundation in 1945, thanks to our best qualities: the high quality of our products that have earned the ISO 9001:2015 certification by TÜV Rheinland, a close and attentive relationship with our customers, and a constant technical innovation in the design of our products.

Our design philosophy is based on three fundamental pillars: the needs of our clients, the observation of the techniques used in dental laboratories and our more than 77 years of experience providing creative and contemporary solutions to the daily problems of professionals in the sector.

Do you want to take a virtual visit to our training and exhibition center?

Contact us and we'll show you!



Talleres Mestraitua SL
(+34) 944 530 388
info@mestra.es - www.mestra.es
48150 SONDIKA (Spain)

