



EOLO

induction

Ref. 080533



EOLO

induction

Its new “brushless” induction motor extends its useful life between 5 and 10 times compared to traditional models, and has a new double filter system optimized for work in the dental laboratory (including abrasives such as aluminum oxide). Can be fitted with a HEPA filter.

It easily adapts to laboratory furniture, taking up minimal space. In addition, the ergonomic design facilitates its use and mobility. The electronic control with LCD screen is equipped with protection systems against overloads or obstructions in the suction mouth and with a visual indicator of the filter filling level and detection of the micromotors.

It allows manual or automatic synchronized operation with up to 3 different devices (sandblasters, micromotors, etc.). The detection and adjustment of micromotors is carried out by the electronic control itself, which allows any micromotor to be detected, including the “brushless” type.

Specifications

Height 585 mm • Width 210 mm • Depth 500 mm

Weight 17 kg • Voltage 230 V, 50/60 Hz

Power 750 W • Sound level 72 dB



Eolo Induction suction unit

Ref. 080533

THE CHASSIS

FITS PERFECTLY ON THE SIDE OF THE WORKTABLE



“If something works, don't touch it unless you want to improve it.” This simple maxim, applicable to any subject at any time and circumstance, is also one of the basic principles of our company philosophy. But it is also no less true that “whatever does not evolve ends up dying.”

The conflict appears when trying to renew a good product that for many years has demonstrated its reliability and performance, as is the case of the Eolo suction unit:

What can we change?

Where is the potential for improvement?

This is the dilemma our design team faced when tackling the Eolo Induction project.

However, at **MESTRA** we know very well that “renewing” does not mean starting from scratch, changing everything just for the sake of it: renewing consists of applying, -in those points that admit it- the experience and technological advances collected during the life of the product, but maintaining what was already good. A good example is found in our Eolo Induction unit. A product that, after the work of our engineers, has gone from being very good to becoming excellent.

THE CONTROL

ALLOWS VERY SIMPLE AND INTUITIVE MANAGEMENT



The Eolo Induction suction unit is governed by a high-performance microprocessor.

This element allows the simultaneous operation of two handpieces to be synchronized with aspiration. In addition, it has other features such as obstruction detection, disconnection delay time, power control, etc.

All these parameters are visible in a practical synoptic panel. Despite these sophistications, our engineers have put special effort into designing a sober and minimalist control. Forget about extensive instruction manuals full of complicated functions. Let the microprocessor decide automatically and you only worry about working.

THE FILTERING

A WELL STUDIED FILTER SYSTEM ACHIEVES MAXIMUM EFFICIENCY



The suction unit has a set of filters distributed in three steps: most of the dust is collected in a very economical and easy to replace bag. This avoids the need that “bagless” basket systems have for the user to come into contact with the vacuumed dirt. Without a doubt, the bag is a more hygienic and healthy method; and that is why it was the system adopted by **MESTRA**.

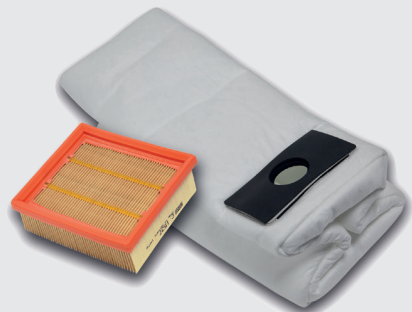
Subsequently, an intermediate fiber filter protects the last step of the chain, which is a high-efficiency filter cartridge.

These three elements combined achieve optimal retention of dust and dirt, eliminating harmful particles from the air that can be harmful to health and also protecting the machine to extend its useful life. All this without forgetting hygiene when emptying the machine.

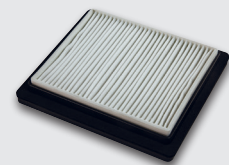
Likewise, the Eolo Induction aspiration is fully compatible with the **MESTRA** Cyclone. **Ref. 080535**, capable of removing up to 98% of dust before entering the machine.

MAINTENANCE

VERY EASY AND AFFORDABLE



Many suction units for dental laboratories have their filters and accessories located in places that are inconvenient to access, forcing forced postures to perform maintenance. With the Eolo Induction aspiration, you can forget about that problem. Our engineers have found a brilliant and novel arrangement: the entire filtering assembly is located in the top cover, which is completely removable. Once you release the lid, you can change the filters in the most comfortable position: standing, on a table...



▲ As an option we have a HEPA filter
REF. **080532-27**

THE MOTOR

POWERFUL, QUIET AND DURABLE



The motor is another of the strong points of the Eolo Induction aspiration. Equipped with the most modern “brushless” technology, it has a much longer lifespan than other dental units. In addition, brushless technology has better energy efficiency, so it achieves greater air flow with half the power of a conventional brush motor.

This aspect is very important for the savings in the electricity bill and for the preservation of the environment.

The low noise level of the Eolo Induction is also surprising. Operating at a medium power level, a slight, perfectly acceptable hum is barely perceptible.

TIPS FOR CHOOSING A SUCTION UNIT

► In this type of machines the motor is key to achieving an excellent result. Above all, it must be robust and durable. The noise level cannot be raised when operating at ordinary suction powers. Without a doubt, units equipped with “brushless” type motors are the most suitable. In addition to energy savings, their low noise level and high power, together with their extraordinary durability, make them the most recommended options.

► Check that the ergonomics and ease of use of the machine are optimal: the controls and controls must be accessible from the seated position. The filter changing operation must be easy to perform.

The machine should be able to move to other locations easily (wheels, handles, etc.).

► The aspiration circuit is also important. The suction must have an efficient filtering system, prepared for very small particles with enormous abrasive power. That is why domestic aspirations are useless. The type of domestic

dirt is different from that of an industrial environment. The filters must be adapted to this circumstance. Also remember that “bag” type filters are much healthier and more hygienic than “basket” type filters. Due to the low price of the bag, it is not justified that the user may come into contact with dirt.

► Also look at the details: the feel of the control panel buttons; the smoothness of the ride; the ease of cleaning; accessibility to the filter area, etc. They are distinctive signs of a good brand. Quality is not improvised, it requires years of effort, patience and a lot of experience.



At **MESTRA** we are specialized in the manufacture and distribution of dental machinery and appliances. We are a Spanish company based in Bizkaia. We currently export to clients in more than fifty countries on five continents and we have more than a thousand references in our catalogue.

We have maintained a line of constant expansion since our foundation in 1945, thanks to our best qualities: the high quality of our products that have earned the ISO 9001:2015 certification by TÜV Rheinland, a close and attentive relationship with our customers, and a constant technical innovation in the design of our products.

Our design philosophy is based on three fundamental pillars: the needs of our clients, the observation of the techniques used in dental laboratories and our more than 77 years of experience providing creative and contemporary solutions to the daily problems of professionals in the sector.

**Do you want to take
a virtual visit to our training
and exhibition center?**

**Contact us and
we'll show you!**



Talleres Mestraitua SL
(+34) 944 530 388
info@mestra.es - www.mestra.es
48150 SONDIKA (Spain)



Sistema de
Gestión
ISO 9001:2015

www.tuv.com
ID 1100018003