



# KOALA vacuum mixer

Ref. 080520



# KOALA vacuum mixer

Ref. 080520

High quality works are not got just using right materials. Techniques and machines to handle them best are also required. Facing this fact, **MESTRA** is pleased to introduce the Koala vacuum mixer, a machine designed to fulfil most stringent beating requirements in dental field that combines simplicity, ergonomics and top features.

**Koala** vacuum mixer easily allows beating plaster, alginate, silicones and similar materials. It can be placed on any wall thus taking up little space. If needed it can also be placed on a base specially designed for it.



## Characteristics

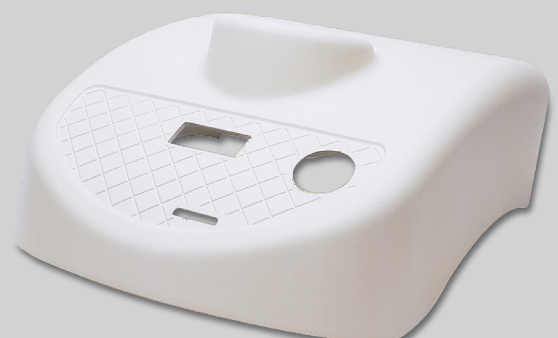
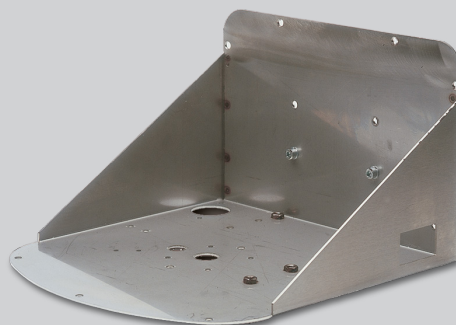
	Ref. 080520	Ref. 080520 + 080521
Height	200 mm	640 mm
Width	310 mm	360 mm
Depth	320 mm	400 mm
Weight	10 kg	19 kg



## Chassis and outer body

A robust 2 mm thick stainless steel chassis supports all mechanical elements. It combines corrosion resistance with mechanical rigidity.

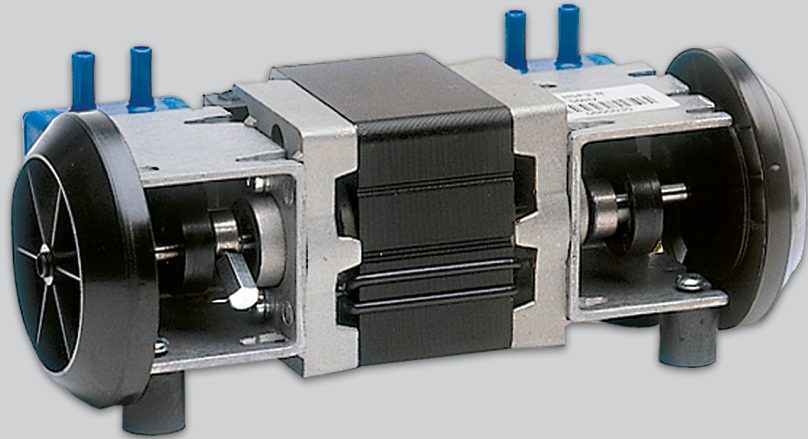
Outer body is made in moulded composite thus conferring the Koala Vacuum Mixer its own identity in a modern and attractive line.



## Valve

---

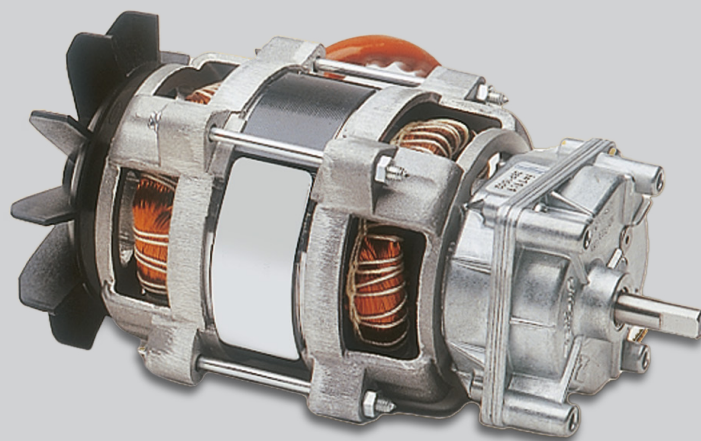
A double diaphragm pump with non return valve is used in order to get 95% vacuum level and keep it for several hours even in case of electrical supply breaking. This prevents the bowl from falling even if the pump is not running, thus avoiding accidents.



## Motor

---

Mixing blade spinning is got by a powerful 50 W. geared motor with gears that minimize noise. Shaft exit speed is 240 r.p.m.



# Fixation system

**Koala** vacuum mixer clamping device to the wall or to the base ensures a firm and reliable fixation. There is no need of special tools nor complex operations to place the machine and be ready to work.

**Koala** mixer has as attachment a robust base (**Ref. 080521**) that changes it into a table model. It has holes at 3 different heights so the **Koala** can be placed at the height that best suits the user.

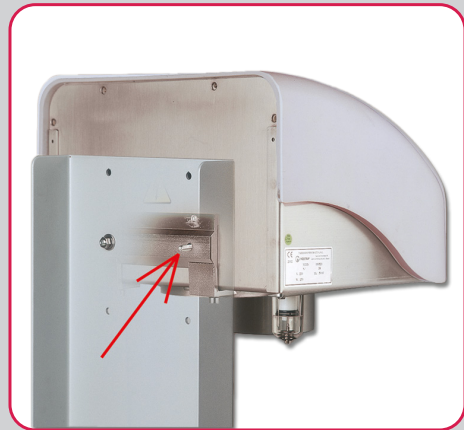
## Characteristics Ref. 080521

Height 560 mm

Width 360 mm

Depth 400 mm

Weight 9 kg



## Clamping arm

Another recommended accessory for those who use non-vacuum mixing techniques is the fastening arm (**Ref. 080522**).

The arm system keeps the bowl joined to the mixing body when working in non-vacuum cycles. It is possible to select height between two different bowl sizes (250 cc./ 550 cc.) by just turning it.

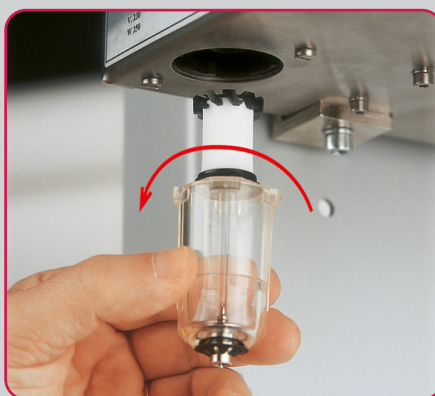


Ref. 080522

## The mixer



**Koala** vacuum mixer has a high performance pneumatic cartridge type filter that protects mechanical elements against dust and dirt.



Replacement or cleaning of filter is easy. Access is immediate and the machine does not have to be dismantled. No tool is needed.



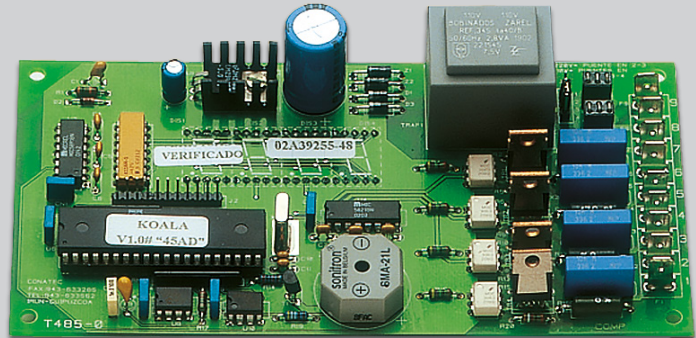
In case the vacuum mixer stops due to electrical supply breaking, the bowl can be released from the mixing body (emergency manoeuvre), pressing the unloading valve on the filter casing.

# Functions

---

All functions of the Koala Vacuum Mixer are ruled by a control with microprocessor. As main features it can be quoted the following:

- ✓ 4 digits display with alpha-numeric functions.
- ✓ Software of Vacuum Circuit Unloading .
- ✓ Electrovalve Control.
- ✓ Starting self-checking.
- ✓ Acoustic signal for end of cycle.
- ✓ Motor kickback every 10 seconds
- ✓ Memorization of the last parameters run.
- ✓ Software Detection and control of possible external problems or user mistakes (inadequate programming, emergency stops, cycle cancellation, electrical supply breaking, and so on)



---

A wide range of functions is not incompatible with an easy use. **Koala** Mixer Control Panel has an intuitive character, so it is easy to get used to it in very few time. Its main characteristics are:

- ✓ Machine Operation Mode of three possibilities: **Only vacuum, vacuum + mixing, only mixing.**
- ✓ Selection and visualization of time on a 4 digits Display. When a cycle is running, time is watched in countdown mode.
- ✓ Programmes of up to 3 steps can be run with different timing for each of them. Possible intermediate stops.
- ✓ Vacuum can be continuously surveyed on the vacuum gauge.
- ✓ Unloading of Vacuum system through electro valve.
- ✓ Starting up of machine with just one stroke.



# Bowls

Placement of bowl on the machine is made by 12 faces coupling, so it is easy to find the fitting position. Besides, close joints are made in soft elastomer, to reduce pressure that has to be made by the user in order to fit the bowl. Just a few seconds are needed for the bowl to be firmly held on the mixer.



**Koala** vacuum mixer has one of the largest range of bowls available in the market, with capacities of 250 cc.; 550 cc.; 750 cc.; 1.000 c.c.; 1.250 c.c.; and 230 cc. (specially designed for alginate mixing). All of them are made in resistant clear polycarbonate.



## Characteristics

Bowls	Reference
1 - 250 cc	080523
2 - 550 cc	080524
3 - 550 cc standar	080524-P
4 - 750 cc	080525
5 - 1000 cc	080526
6 - 1250 cc	080527
7 - 230 cc (special alginate)	080528

*The machine is supplied with two bowls of 250 cc. and 550 cc.*



At **MESTRA** we are specialized in the manufacture and distribution of dental machinery and appliances. We are a Spanish company based in Bizkaia. We currently export to clients in more than fifty countries on five continents and we have more than a thousand references in our catalogue.

We have maintained a line of constant expansion since our foundation in 1945, thanks to our best qualities: the high quality of our products that have earned the ISO 9001:2015 certification by TÜV Rheinland, a close and attentive relationship with our customers, and a constant technical innovation in the design of our products.

Our design philosophy is based on three fundamental pillars: the needs of our clients, the observation of the techniques used in dental laboratories and our more than 77 years of experience providing creative and contemporary solutions to the daily problems of professionals in the sector.

**Do you want to take a virtual visit to our training and exhibition center?**

**Contact us and we'll show you!**



Talleres Mestraitua SL  
(+34) 944 530 388  
info@mestra.es - www.mestra.es  
48150 SONDIKA (Spain)

