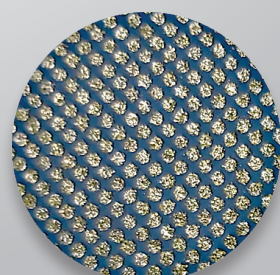
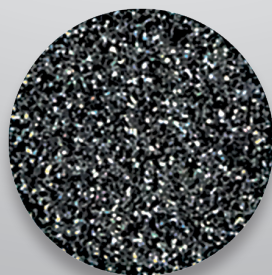
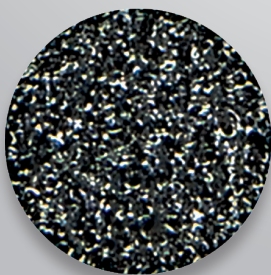




Serantes

3000



Serantes

3000

The value of the experience

1968 represents a very significant date for our company. After more than 25 years manufacturing tools for Dental Laboratory, MESTRA launched its first machine: a trimmer. Since then we have come investing a lot of work, illusions, fatigue... in the development of our products. Today we feel that this effort was worth it, because it allows us to present our complete range of trimmers: three different models especially designed to meet the requirements of any dental technician.

For more than 50 years, our firm has accumulated a lot of experience, and it shows: it shows in the design, it shows in the safety, it shows in the operation... We dare to say that our range of trimmers represents what is probably the most complete and evolved of those present today in the market. We are aware that such a categorical statement must be duly argued. That is why we invite you to discover in this brochure the objective reasons that incline us to believe it.

Characteristics

Height 340 mm • Width 285 mm • Depth 380 mm

Weight 10 kg • Rated power 1600 W • Speed 3000 r.p.m.

Disc diameter Ø 235 mm • Window width 115 mm

Voltage 230 V, 50/60 Hz



Sandpaper disc trimmer
REF. 080097



Diamant disc trimmer
REF. 080098



Sandpaper disc - DRY trimmer
REF. 080099

SAFETY



Safety has been the central premise in the development of our trimmer range. Our engineers are aware that a large highly abrasive disc, driven by a powerful motor spinning at 3000 rpm. It is something very serious. Things get even more complicated if we take into account the presence of water. This is the reason that has led us to adopt rigorous security measures, both active and passive:

ACTIVE SECURITY

1. Motor brake that acts even in a power outage, stopping the disc in just 3 seconds. During the trials of reliability carried out by MESTRA, the brake easily withstands more than 50,000 manoeuvres.

2. Zero voltage safety switch, which prevents accidents due to sudden start-up in the event of a power failure.

PASSIVE SECURITY

Completely sealed water installation. The design of the machine has been designed so that the water line passes through a different path than the electrical installation. This prevents the electrical elements from getting wet in the event of water leaks.

ERGONOMICS



The way you work greatly influences the final quality of the cut model. Therefore, by designing machines with pleasant and comfortable operation, we also guarantee quality work.

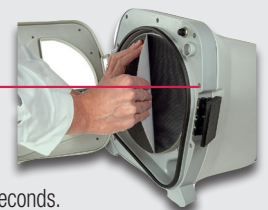
1. The dimensions of both the work window and the table are extraordinarily generous, avoiding the inconvenience caused by narrow spaces. It is possible to rest the hands without any problem.

2. The abrasive disc is easily accessible through a quick-open hinged door. The maintenance, cleaning and disc change operations are performed with surpri-

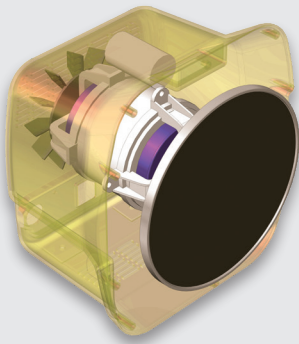
sing simplicity.

It is possible to "brand new disc" in just a few seconds. In addition, the roughness of the abrasive can be chosen between 80 and 120 grit.

3. The heart of the machine is a powerful motor with more than enough power for trimming models exerting a minimum pressure on the disk.



THE PERFORMANCE



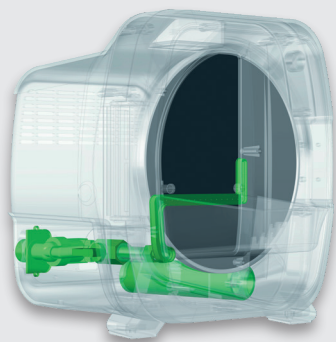
"Principle of conservation of angular momentum". With this very complicated name refer our engineers at the physical principle that allows our trimmers to turn so smoothly. Basically, the greater the mass and diameter of a rotating disk, the greater its tendency to keep its axis of rotation stable.

This principle is widely used to stabilize ships, machinery, turbines... even buildings. Just type "gyroscopic stabilizer" in the popular video portal www.youtube.com to understand with multiple examples what we are talking about.

The use of a heavy-duty abrasive disc gives our trimmers without equal turning stability, due to the high angular momentum generated. This translates into softness and "round turn" that cannot reach discs made with a simple metal sheet.

All of our discs are individually balanced in accordance with strict regulations ISO-1940/2953, the same that is used for example for the balancing of the turbines aviation jets. The tolerance allowed is 0.1 gr/mm. The conjunction of a high mass (large angular momentum) and a finely tuned balance produces a surprisingly smooth ride.

CLEANING



The disc cleaning circuit deserves special attention: both the sprinkler and the drain must be carefully calculated for achieve efficient machine operation. This is a point where our engineers have had a chance to shine in particular, in part doing take advantage of the extensive experience of **MESTRA** in design and construction of trimmers.

The objective is getting a good sweep of dirt, but at the same time avoiding annoying splashes of water. Our range of trimmers manages to combine these two goals in an extremely efficient way.

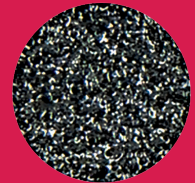
ENVIRONMENT



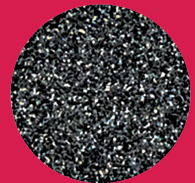
For MESTRA, quality has always been a firm commitment to the client. We are convinced that the care we put into caring for the the quality of our product is the secret of our permanence in the market during these more than 75 years. The Quality-Environment binomial is our commitment to the future.

1. The finishes and quality of construction of our range of trimmers, are the same as characterize the **MESTRA** brand. Of course, all our machines enjoy the **MESTRA** guarantee, a guarantee that gives security and confidence to the client.
2. The materials used in the construction are respectful with the environment. The employment of a chassis made of plastic or high-strength aluminum evidence it: to begin with, they are recyclable materials. Besides, his carbon footprint is very small, as well as its toxicity.
3. The electric motor has been designed and built in accordance with rigorous energy efficiency standards. Caring for the environment must also consider these details.
4. The water cleaning circuit has been designed to achieve high efficiency with minimum water consumption. Water is also a scarce resource on our planet that must be used rationally.

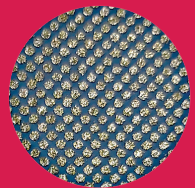
Accesorios



Sandpaper disc coarse grain - 80
REF. 080097-08 (5 U.)



Sandpaper disc fine grain - 120
REF. 080097-09 (5 U.)



Diamant disc
REF. 080098-01 (1 U.)

CAUTION!



Diamond discs are very heath-sensitive: Do not trim or rectify metal pieces or coatings.





At **MESTRA** we are specialized in the manufacture and distribution of dental machinery and appliances. We are a Spanish company based in Bizkaia. We currently export to clients in more than fifty countries on five continents and we have more than a thousand references in our catalogue.

We have maintained a line of constant expansion since our foundation in 1945, thanks to our best qualities: the high quality of our products that have earned the ISO 9001:2015 certification by TÜV Rheinland, a close and attentive relationship with our customers, and a constant technical innovation in the design of our products.

Our design philosophy is based on three fundamental pillars: the needs of our clients, the observation of the techniques used in dental laboratories and our more than 77 years of experience providing creative and contemporary solutions to the daily problems of professionals in the sector.

Do you want to take a virtual visit to our training and exhibition center?

Contact us and we'll show you!



Talleres Mestraitua SL
(+34) 944 530 388
info@mestra.es - www.mestra.es
48150 SONDIKA (Spain)

