

Trimmers

CLASSIC

Ref. 080082-89



1.500 rpm TRIMMER

Ref. 080080



SILICON CARBIDE DISC

Due to its low speed, the main advantage of the trimmer is its easy handling, its silent operation and the scarce splashing it produces. Thus, it is recommended for professionals not very familiarized with trimming who work in places that have to remain clean or in places where they cannot make too much noise.

Characteristics:

Monophasic motor

Voltage 230 V - 50-60 Hz

Rated power 800 W

Disc diameter 250 / 254 mm

Rpm 1500

Capacitor 12 μ F 450 V

1.500 rpm TRIMMER

Ref. 080081



DIAMOND DISC

Similar features of the previous trimmer, but with a diamond disc. The diamond disc, if used properly, has a much longer working life. Besides, the trimming surface is maintained completely flat, with no wear or scratches. Its price, however, is higher.

Characteristics:

Monophasic motor

Voltage 230 V - 50-60 Hz

Rated power 800 W

Disc diameter 250 / 254 mm

Rpm 1500

Capacitor 12 μ F 450 V

CAUTION!

Diamond discs are very heat-sensitive:
Do not trim or rectify
metal pieces or coatings.

3.000 rpm TRIMMER

Ref. 080082



SILICON CARBIDE DISC

It is the model that best meets the requirements of the dental lab. Its trimming power is very high, and it can cope with a heavy workload in a very short time. Recommended for experienced professionals working in places where a little more noise or splashing is not a problem.

Characteristics:

Monophasic motor

Voltage 230 V - 50-60 Hz

Rated power 1200 W

Disc diameter 250 / 254 mm

Rpm 3000

Capacitor 16 μ F 450 V

3.000 rpm TRIMMER

Ref. 080083



DIAMOND DISC

Identical features of the previous model, but with a diamond disc.

Characteristics:

Monophasic motor

Voltage 230 V - 50-60 Hz

Rated power 1200 W

Disc diameter 250 / 254 mm

Rpm 3000

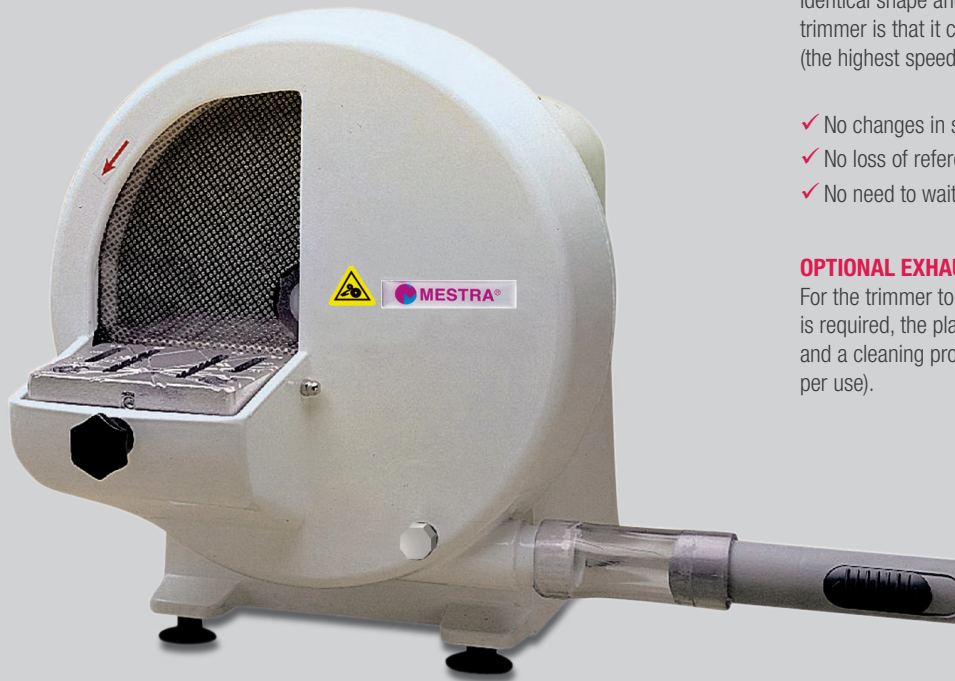
Capacitor 16 μ F 450 V

CAUTION!

Diamond discs are very heat-sensitive:
Do not trim or rectify
metal pieces or coatings.

1.500 rpm dry TRIMMER

Ref. 080084



DIAMOND DISC

Identical shape and construction. The main feature of this trimmer is that it cuts dry, using a diamond disc at 1500 rpm (the highest speed advisable for dry cutting).

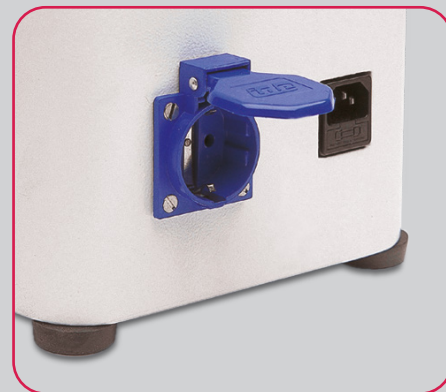
- ✓ No changes in shape or structure.
- ✓ No loss of reference marks on models.
- ✓ No need to wait for models to dry.

OPTIONAL EXHAUSTER (ESSENTIAL)

For the trimmer to work properly, a powerful exhauster is required, the plaster model must be completely dry and a cleaning procedure must be programmed (as per use).



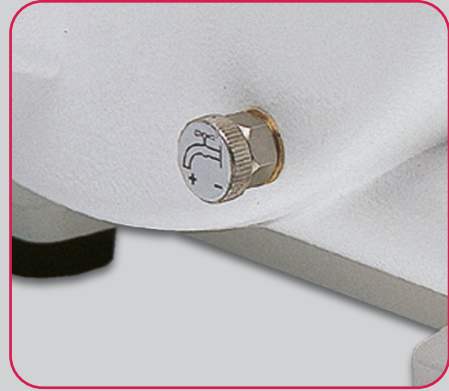
Maximum size roughing out opening.
Spacious, fold-down model support
marked for referencing.



Ref. 080084 has a Schuko type
connector so that trimmer and exhauster
start up simultaneously.



Large, 120 mm working window to facilitate the cutting of large models, enabling better use of the disc.



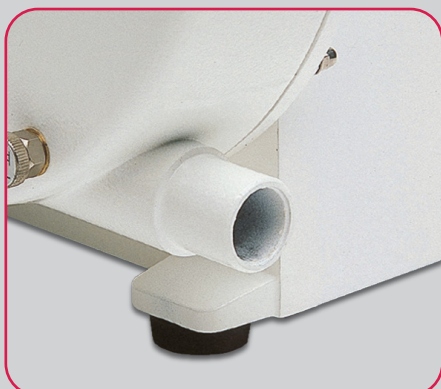
Front-mounted water flow adjustment tap.



Electrovalve for automatic water inflow when the main switch is engaged.



Easy-to-extract, 3-position, fold-down table (80, 90 & 100°). Marked for referencing trimming on precision models.

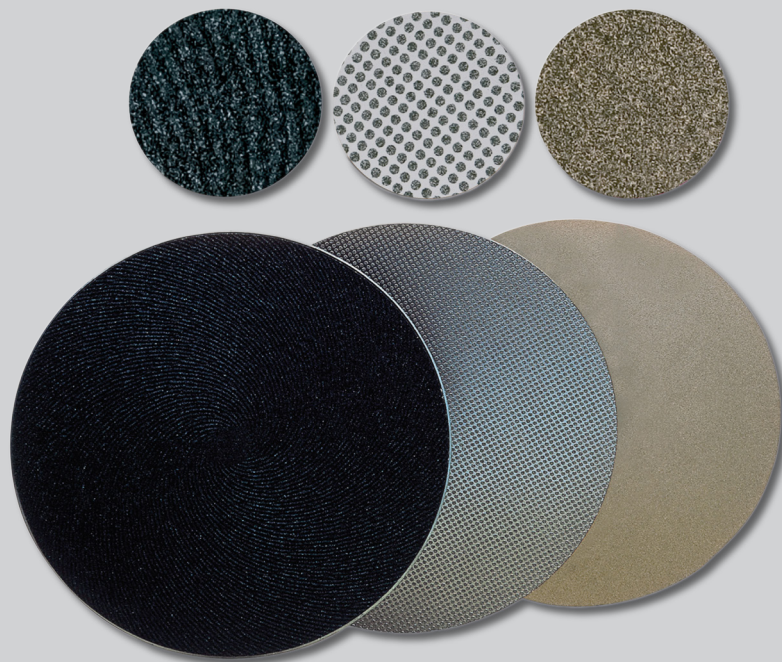


Large, side-mounted drainage system. Water with plaster is expelled by the turbulence caused by the grinding wheel.



Safety switch: if electricity fails the unit is disconnected and must be manually reset (thus preventing accidental start-up).

DISCS



SILICON CARBIDE DISC

Ref. 080080-03

With spiral grooves for high cutting power.

Supported on a 250 mm diam. metal plate to prevent vibration and rocking.

DIAMOND DISC

Ref. 080081-01

Made with small sintered diamond discs spread over the whole plate. High abrasive power with minimum effort, leaving a smooth surface. Long-lasting. Diameter 254 mm, mounted on metal plate.

ALL DIAMOND DISC

Ref. 080079-05

Similar to the previous one, but with the surface completely covered with synthetic diamond, for a finer finish.

CAUTION!
Diamond discs are very heat-sensitive:
Do not trim or rectify
metal pieces or coatings.

POLYPROPYLENE DECANTER (19L)

Ref. 080085



Made of resistant polypropylene.

It has been specifically designed for a quick and easy cleaning, since dirt is collected in a plastic bag. The lid closes hermetically and prevents the spread of bad smells. Its size and shape have been designed for the unit to be easily installed under the sink.

Specifications:

Height 465 mm • Width 400 mm • Depth 400 mm
Weight 3,2 kg • Capacity 19 L

POLYPROPYLENE DECANTER (14L)

Ref. 080087



Similar features to the Ref. 080085, but smaller (14 l)

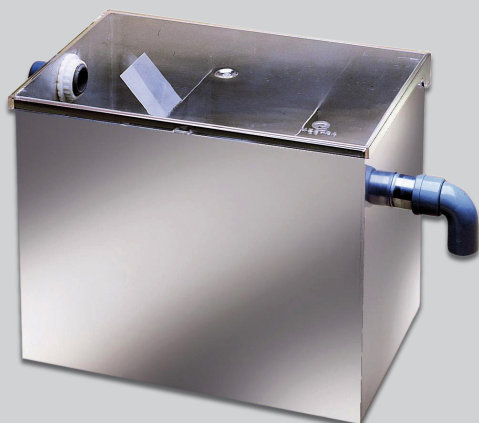
Specifications:

Height 345 mm • Width 350 mm • Depth 350 mm

Weight 2,2 kg • Capacity 14 L

DECANTER FOR TRIMMER (18L)

Ref. 080086



- ✓ Made of stainless steel.
- ✓ With plastic lid to prevent smells.

Specifications:

Height 290 mm • Width 450 mm • Depth 230 mm

Weight 6,5 kg • Capacity 18 L

HIGH CAPACITY DECANTER (70L)

Ref. 080089



It is made in highly resistant fibreglass with a total capacity of 70 l and a design that allows an easy installation under sink. It also has wheels which make its movement easier. Cleaning and emptying operations are easy because of the optimum access to the cube. This machine is supplied with all couple nuts and accessories for its installation.

Specifications:

Height 615 mm • Width 520 mm • Depth 600 mm

Weight 10 kg • Capacity 70 L



At **MESTRA** we are specialized in the manufacture and distribution of dental machinery and appliances. We are a Spanish company based in Bizkaia. We currently export to clients in more than fifty countries on five continents and we have more than a thousand references in our catalogue.

We have maintained a line of constant expansion since our foundation in 1945, thanks to our best qualities: the high quality of our products that have earned the ISO 9001:2015 certification by TÜV Rheinland, a close and attentive relationship with our customers, and a constant technical innovation in the design of our products.

Our design philosophy is based on three fundamental pillars: the needs of our clients, the observation of the techniques used in dental laboratories and our more than 77 years of experience providing creative and contemporary solutions to the daily problems of professionals in the sector.

Do you want to take a virtual visit to our training and exhibition center?

Contact us and we'll show you!



Talleres Mestraitua SL
(+34) 944 530 388
info@mestra.es - www.mestra.es
48150 SONDIKA (Spain)

