



# Washing and polymerizer machine M9-M18-EXTREME

Ref. 080407 - 080405 - 080063



# Washing and polymerizer machines M9-M18-EXTREME

There is no doubt that the family of dental polymerizers **MESTRA** is one of the most complete of the market:

two models with capacity for 9 and 18 muffles (**Magic 9 and Magic 18**), and a model more equipped with a shower for dewaxing muffles (**Poli extreme LP-E2**). This wide range comfortably covers any need within a dental laboratory.

However, just talk about versatility would be an understatement. We would also have to mention its robustness and reliability; the high level of product quality; and its chassis made entirely of the highest quality stainless steel that, in addition to durability, rust-free and easy to clean, gives these machines their characteristic style and beauty.

Don't you think these virtues are too few? Don't worry We still have more arguments for you to decide on one of our products. You We invite you to continue reading.



Ref. 080063



Ref. 080407

Ref. 080405

	Magic 9 080405	Magic 18 080407	Extreme 080063
<b>Voltage</b>	230 V - 50-60 Hz.	230 V - 50-60 Hz.	230 V - 50-60 Hz.
<b>Power</b>	1750 W	3000 W	2200 + 400 W
<b>Dimensions</b>	Height 470 mm (with knob) Width 270 (with key) Depth 480 mm	Height 510 mm (with knob) Width 420 (with key) Depth 500 mm	Height 450 mm (without knob) Width 405 (with key) Depth 635 mm
<b>Inside measures</b>	Height 335 mm Width 180 mm Depth 350 mm	Height 350 mm Width 320 mm Depth 400 mm	Height 350 mm Width 320 mm Depth 400 mm
<b>Weight</b>	15 kg	20 kg	34 kg

## Simplicity



One of the hallmarks of the **MESTRA** brand is simplicity. We always intend to obtain products that more than fulfill their function, but at the same time are pleasant to handle on a day-to-day basis.

Our family of polymerizers could not be an exception. Over the years any of our polymerizers will end up becoming your most faithful companion.

You'll see how easy it is to get any job done with a product designed specifically to make your life easier.

## Precision



Optimum polymerization and, therefore, Consequently, a quality and durable final product can only be achieved through precise control of the working times and temperatures. Our range of polymerizers offers complete flexibility of programming to fit the requirements of any material present in the market.

But this is not can be complicating handling: our engineers designed a easy and effective way to program our machines through an intuitive synoptic screen. A quick glance is all it takes to view all cycle parameters. In a few minutes any user will be able to use these machines.

## Capacity

---



All polymerizers use water and electricity in its cycles. Also We know that these two resources, in addition to being scarce, must be used in an adjusted and rational way to take care of the environment and the economy.

Our family of polymerizers has three different sizes and powers to fit any need: from a small laboratory to much larger dental businesses.

Choosing the most suitable product is the basis for a rational use of resources. Obviously it has to be the product that adapts to your needs, needs and never the other way around.

## The unwaxed

---



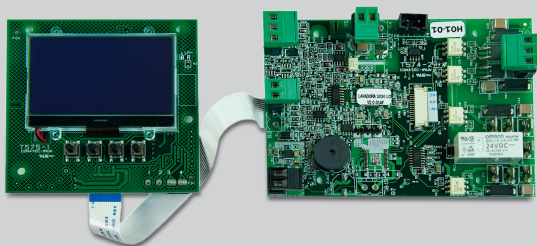
The flagship of this family is undoubtedly our **Poli Extreme LP-E2** washing machine. A machine that, in addition to serving as a classic polymerizer, incorporates a powerful shower for unlocking muffles. Like the rest of the family, it also has the same philosophy of simplicity in programming and use. The only difference is the addition of the shower.

This machine provides high productivity, raising the level of production to surprising heights.

Also available for this machine a practical stainless steel cabinet equipped with internal shelves that allow you to deposit flanged muffles or any other material.

## The quality

---



**MESTRA** products have constructive peculiarities characteristics of our brand that make them articles of very high quality and reliability. For this reason, -and despite of his polyvalent personality-, the components used in our family of polymerizers (Motor, control, resistors, valves, etc.), have been chosen within the high industrial range. This guarantees a long life with hardly any problems, as long as the recommended operations are carried out maintenance.

This quality in the components can be seen in all the details: the charm of the synoptic panel, the fit of all the pieces, the feel of the controls and buttons. Rigorous are met quality standards that **MESTRA** applies to all its products.

With the **MESTRA** polymerizers, get fully professional jobs for many years, it is fully guaranteed.



At **MESTRA** we are specialized in the manufacture and distribution of dental machinery and appliances. We are a Spanish company based in Bizkaia. We currently export to clients in more than fifty countries on five continents and we have more than a thousand references in our catalogue.

We have maintained a line of constant expansion since our foundation in 1945, thanks to our best qualities: the high quality of our products that have earned the ISO 9001:2015 certification by TÜV Rheinland, a close and attentive relationship with our customers, and a constant technical innovation in the design of our products.

Our design philosophy is based on three fundamental pillars: the needs of our clients, the observation of the techniques used in dental laboratories and our more than 77 years of experience providing creative and contemporary solutions to the daily problems of professionals in the sector.

**Do you want to take a virtual visit to our training and exhibition center?**

**Contact us and we'll show you!**



Talleres Mestraitua SL  
(+34) 944 530 388  
info@mestra.es - www.mestra.es  
48150 SONDIKA (Spain)

