



Centrifuge VESTACAST

Ref. 040061



VESTACAST casting machine

Ref. 040061

Sometimes a sophisticated interior hides behind a simple appearance. This is what happens with the **Vestacast Casting Machine**: it has been designed for very easy and intuitive handling. Just a few minutes are needed to understand how the machine works and to start work in a professional way.

However, behind this apparent simplicity is a highly complex electronic heart that uses the latest technological advances to achieve excellent casting quality. Vestacast is capable of casting any alloy used in the dental field*, consuming very little electricity and achieving a clean, standard melt at the same time.

Both the frame and the inner chamber are 100% stainless steel, which makes cleaning easier and eliminates the risk of oxidation.

Simplicity and sophistication combine in a single machine to achieve a level of work quality unknown before, and all at a very competitive price.

It occupies the same space as a conventional casting machine, so it can be located in any corner of the dental laboratory.

**Except titanium and its alloys. For gold and platinum casting graphite crucibles are required. The Vestacast has a compact design.*

Characteristics:

Height 360 mm • Width 565 mm • Depth 640 mm

Power 16 A (aprox.) • Voltage 230 V, 50/60 Hz

Melting power 2,6 KW, 100 kHz • Weight 55,5 kg

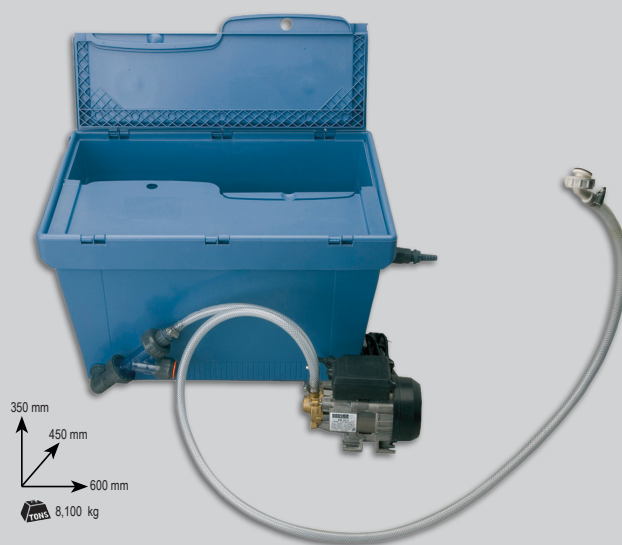
Water supply 2 L / min (aprox.)



It is very easy to install the appliance: just plug it in to any earthed power point and connect the input hose for cooling water and the output hose for drainage. Vestacast is then ready to operate.



On top of the machine is a peephole to observe the texture of the alloy while it is being melted, so that it can be cast at the right time. The glass has a UV filter to protect your eyes when looking into the peephole.



COOLING CIRCUIT- Ref. 040063

It is strongly recommended to cool the device through a direct connection to the water source. But in the case the device is installed in a room with no access to a water source, there is a closed cooling circuit available. The circuit, compact and small, is monitored automatically by the machine itself.

Características



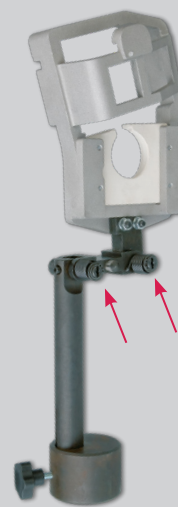
The control panel is synoptic, allowing easy handling. Three control buttons and a potentiometer to regulate melting are sufficient to carry out casting. The melting point can even reach 1750 °C. The state of the process is visualised by four pilot lights.



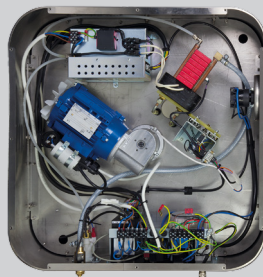
Access to the interior is wide thanks to the large upper window. The arm of the Vestacast is self-expanding with return springs, which means that maximum centrifuge acceleration can be achieved when the machine starts up. The lightness of the arm considerably reduces the vibration commonly found in this kind of apparatus.



The balancing of the arm is made easier by the use of cylinder holders that are weight-balanced for every cylinder diameter. This system is used to eliminate adjustments, always achieving a perfect weight distribution regardless of the size of cylinder used.



Spring automatic withdrawal system to avoid coating losses when asymmetric starting.



The components used are top-quality and are assembled to form independent modules. This design greatly simplifies maintenance tasks: just remove the damaged module and replace it with a new one. This operation can be carried out by any Technical Service at a reasonable cost.

ACCESSORIES INCLUDED



VESTACAST has a robust stainless steel cabinet available (not included) that transforms the over table model into a full-unit machine. Furniture shelves are very practical in order to store tools used in casting operations. (Ref. 040062)

Characteristics:

Height 640 mm • Width 550 mm
Depth 550 mm • Weight 34 Kg





At **MESTRA** we are specialized in the manufacture and distribution of dental machinery and appliances. We are a Spanish company based in Bizkaia. We currently export to clients in more than fifty countries on five continents and we have more than a thousand references in our catalogue.

We have maintained a line of constant expansion since our foundation in 1945, thanks to our best qualities: the high quality of our products that have earned the ISO 9001:2015 certification by TÜV Rheinland, a close and attentive relationship with our customers, and a constant technical innovation in the design of our products.

Our design philosophy is based on three fundamental pillars: the needs of our clients, the observation of the techniques used in dental laboratories and our more than 77 years of experience providing creative and contemporary solutions to the daily problems of professionals in the sector.

Do you want to take a virtual visit to our training and exhibition center?

Contact us and we'll show you!



Talleres Mestraitua SL
(+34) 944 530 388
info@mestra.es - www.mestra.es
48150 SONDIKA (Spain)



Management System
ISO 9001:2015
www.tuv.com
ID 1100018003