



MESTRA®



Sandblaster

PLUT  **N**



MESTRA®

Mother Teresa said that “life not just a matter of doing great things. It is also important doing small things, but with much love”. She was right. In MESTRA, we can only say two things about the Plutón sandblaster: that it is small, and that in the project we have invested all the love, knowledge and experience gathered in our firm after manufacturing sandblasters for more than 50 years. However, small size should not be confused with minimalism. Despite the first impression, the Plutón sandblaster has the same elements and features of its elder sisters. It is a clear example of what we could call “concentrated features”.



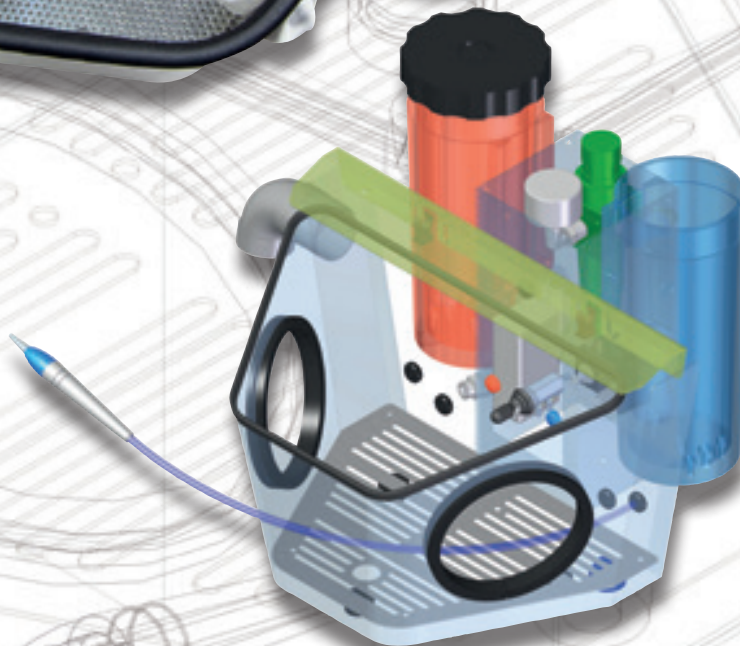
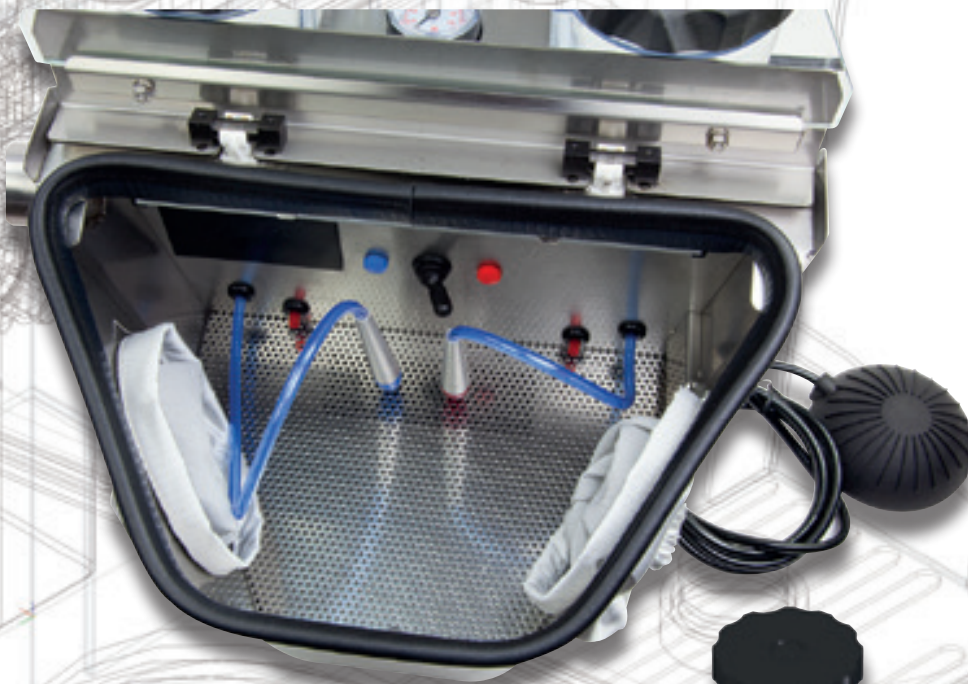
Size does matter

When we decided to design the **Plutón** sandblaster, we knew perfectly what we wanted to achieve: a sandblaster with the reliability of the “Constellation” series, the economy of the “Practic” series, and the size of the “T” series. The two first requirements were not especially difficult, but finding the “perfect measures” to fit everything together in a single product was a real nightmare.



“Perfect measures” means a compact size to place the unit anywhere; a wide enough working area; and ergonomics adapted to every type of user (mean, women, tall, small, burly, slim, etc.). We had to create 12 –or maybe 15–different-sized models to find a final solution.

The result can be appreciated in everyday operation: it can be placed anywhere, its size allows a comfortable operation, regardless of the type of work or the user's size. Sandblasting has never been so easy.





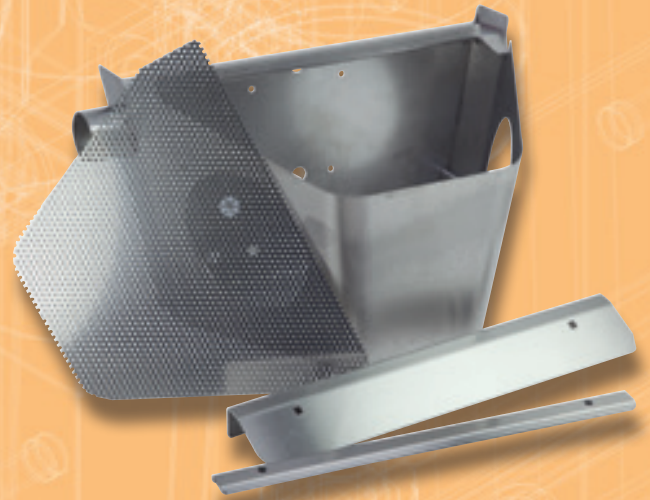
MESTRA®

Quality

The **Plutón** sandblaster is completely built in stainless steel, very fine material, rustproof, and easy to clean. Its components ensure a long working life, causing almost no trouble or breakdown if the basic maintenance is regularly performed.

We must not forget that its pneumatic circuitry has the same components as the “Constellation” family, very appreciated sandblasters among users and known to be robust and reliable. Its high quality can be seen in all the details: the precision and simplicity of its selection button; the smooth tightening of the tank lids; the stability on the working area...

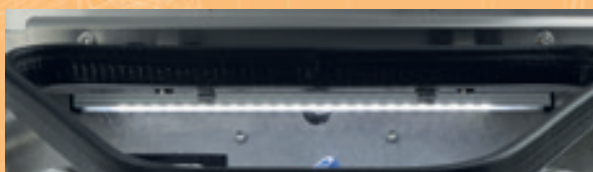
The **Plutón** sandblaster guarantees a fully professional finish. If we use the right sand, pressure and blasting distance, we can perform any task; the surfaces will be smooth and glossy, with a characteristic brightness and quality.



Visibility

Working comfortably is not enough. To perform any sandblasting task, it is essential to have an optimal visibility. The **Plutón** sandblaster offers an optimal visibility through the window, thanks to its frustoconical shape, chosen to maintain a wide screen and a reduced base. The user's hands and back are in a comfortable position when choosing a good vision angle.

A powerful **LED** lamp produces a light similar in tone and colour to the sun light, without gleam. It is built in the upper part of the unit to prevent dazzling.



Dust exits the chamber via a tube at the side of the machine, to which any conventional suction unit may be connected, ready for work with silicon oxide. **MESTRA** recommends references **R-080532 Eolo plus** and **R-080539 Gemini**.

The chamber-change valve is inside the chamber. The colour criterion allows the right chamber to be identified and selected. A rubber attachment inside the chamber may be used for initial adjustments of the sand jet.





MESTRA®

Saving

When we are talking about saving, we have to take into account, not only the purchase price of the product, but also its maintenance, and specially the saving on consumable materials. The **Plutón** sandblaster features quick relief valves, which stop the sand flow within a split second after releasing the pedal.

Thanks to this system (shared by all the **MESTRA** sandblasters), besides the saving on sand, we achieve a substantial improvement of safety, since the tank remains completely depressurized. Saving tastes always better if it comes along with an improvement in safety.

As for the unit's maintenance, all the blasting system can be dismantled quickly, easily and with no tools to solve minor blockages. The silencing filters and the pressure gauge filters should be replaced only once a year (with a normal professional use).



The length, diameter and wear resistance of the hard metal nozzles have been perfectly studied, to achieve a long working life with hardly any variations in their diameter. This results in a uniform and concentrated blast that can be directed to diminutive corners and details of the piece.



PLUTON

Advice to choose a sandblaster

You may be currently interested in buying a new sandblaster. In this case, you are lucky, because you will find many models and manufacturers of excellent products in the market. We would like to give you several useful tips for you to choose the most suitable model.

- First of all, be objective. Do not let names, nationality or any other information from the dealer influence you. Do not pay attention to set phrases such as “there must be something wrong if it is so cheap”, “cheap products often prove to be expensive”, “in XX (country) they have never been good at manufacturing machines” and so on. Take into account just reasons, facts and arguments. Never accept disparaging remarks from dealers. Compare at least three models (four, better) before choosing one.

- In this kind of machine cleaning is a key point. Due to the type of work it performs, dust and dirt are almost constant. Therefore, you should choose a model easy to clean, without many corners, made of a smooth material, and that can be cleaned many times without suffering any damage. Do not forget that small things generally are more easily cleaned than larger ones.

- Pay special attention to the size. We advise you to place your hands into the chamber and to simulate the sandblasting tasks you usually perform. Do you think you have enough room? Do the pieces you usually sandblast allow you to move freely inside the chamber? If so, don't think about it twice: Plutón is your sandblaster. If not, start thinking about the Constellation/Planetarium series of **MESTRA**.

- The quality of the components is essential. All our sandblasters have pneumatic industrial components. Besides, the tanks have been tested in overpressure conditions. All this is enough to guarantee endurance and robustness.

- Check out the details as well: the touch of the tank-selection button, the smooth tightening of the sand tanks, an easy cleaning, an easy access to the blasting chamber... are distinctive features of a good brand. Quality is not improvised; it requires years of effort, patience and experience.

- Although it is a secondary feature, do not forget the product's design: a modern and efficient professional should use modern and efficient tools. Several decades old designs offer a poor look of your laboratory. Robustness, efficiency, ergonomics and price are not at odds with aesthetics.

After analyzing the aspects above, consider the price, the technical support and all the other services offered by the manufacturer. Think over all this information, and make your choice. If you take into account all these tips, be sure you will always make the right choice, whatever you decide.



Specifications

Plutón sandblaster R-080253

Height	290 mm
Width	340 mm
Depth	235 mm
Weight	6,100 kg.
Voltage	230 V, 50/60 Hz.
Max. air consumption	80 l/min.
Operating pressure:	2 a 5 atm.

*The manufacturer reserves the right to modify these specifications without notice.



MESTRA®
Your trusted brand



TALLERES MESTRAITUA S.L.

Txori-Erri Etorbidea, 60 Tlf. +34 944 530 388* Fax: +34 944 711 725

E-mail: comercial@mestra.es

48150 SONDIKA - BILBAO - (ESPAÑA)

www.mestra.es (+ than 1000 references on catalogue)

Distributor: